



ALL THINGS NEW

2 CORINTHIANS 5:17



Adult & Teen Challenge

Pacific Northwest

Annual Report **2024**

In 2023, we celebrated 40 years of ministry as we focused on the Proof that the power of Christ changes lives. Matthew 7:20 was our key verse: **“Thus, by their fruit you will recognize them.”** This passage challenged us to examine our lives and, in this case, our ministry to look for lasting results and impact. I am excited to report that Adult and Teen Challenge has impacted thousands of individuals and families over the past 40 years of ministry, and your support plays a big role in our effectiveness.

Just in this last year, 2023, we were blessed to reach more people searching for hope than ever before. We welcomed 1005 individuals into our residential programs, an all-time high! We witnessed 528 individuals accept Christ as their Lord and Savior. Through outreach, our teams ministered locally and internationally, sending teams to Uganda and Cambodia and networking with Global Teen Challenge ministries across the globe.

Locally, we ministered in 297 churches and shared our prevention program, *Decide to Impact*, in 77 schools. Our outpatient programming, Life Renewal, served 1001 clients, providing over 10,000 hours of counseling services. Our *Super Thrift* Thrift Stores set an all-time high sales record last year, gained 86,000 loyalty member customers, and provided an impressive 98,700 hours of vocational training for our students.

We also were blessed to complete several building projects this past year including:

- New Life Renewal offices in Portland and Twin Falls,
- Remodeled our Life Renewal offices in Alaska,
- Moved to our new campus in Billings,
- Finished our four (4) cabins at our Alaska Women's Campus,
- Completed our walk-in cooler/freezer project at our Willamette Valley Men's Campus,
- Replaced the roof at our Seattle Men's Campus, and
- Fully completed our Shared Services Office project.

In 2024, we will be celebrating our new theme: **All Things New**. A new life in Christ, and a refreshed vision for our ministry. Our key verse is **2 Corinthians 5:17 “Therefore, if anyone is in Christ, the new creation has come: The old has gone, the new is here!”**

I pray you are encouraged by this year's annual report. We are grateful for your faithful partnership with our ministry. You are Putting Hope Within Reach!



Chris Hodges, President/CEO





“Therefore, if anyone is in Christ, the new creation has come: The old has gone, the new is here!”

2 Corinthians 5:17



“When I walked through those doors and started to hang out with the other students, God knew that is what I needed. He knew that I needed people who had been where I had been and who would walk through this with me.”

Chris



“It was at Adult & Teen Challenge that I was finally able to surrender my addiction to the Lord. I had given Him other aspects of my life, like the trauma I had experienced, my brother’s death and my marriage but not my addiction.”

Jess



“The way that I would describe the change I have experienced is that I am an apartment and God has moved in. He is throwing the things out that I don’t need anymore and cleaning me from the inside out.”

Saul



“God showed me while I was in the program that if I didn’t take this seriously and understand the importance of what God was doing in my life that I was going to end up in a place that He doesn’t want me to be.”

Teesa

THE PROBLEM

107,450 people died from drug overdose between August 2021 and August 2022, continuing the trend of rising overdose deaths.¹

FENTANYL is the most common drug involved in overdose deaths.²

\$740 billion spent annually in the US dealing with drugs & alcohol related costs including crime, lost productivity, & health care.³

Overdose deaths have increased **200%** in a decade.⁴

Alcohol is the **3rd** leading cause of preventable death in the US.⁵

¹ https://www.cdc.gov/nchs/pressroom/nchs_press_releases/2021/20211117.htm

² <https://www.cdc.gov/stopoverdose/fentanyl/index.html>

³ NIH, National Institute on Drug Abuse, www.drugabuse.gov/related-topics/trends-statistics

⁴ www.drugabuse.gov/related-topics/trends-statistics/overdose-death-rates

⁵ www.niaaa.nih.gov/alcohol-health/overview-alcohol-consumption/alcohol-facts-and-statistics

OUR COMPREHENSIVE APPROACH

We are reaching more people than we ever have, and are bringing a more comprehensive approach to **Put Hope Within Reach of Every Addict.**





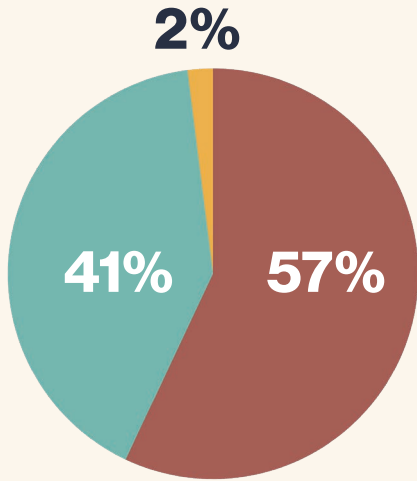
2023

BY THE NUMBERS



Adult & Teen Challenge
Pacific Northwest

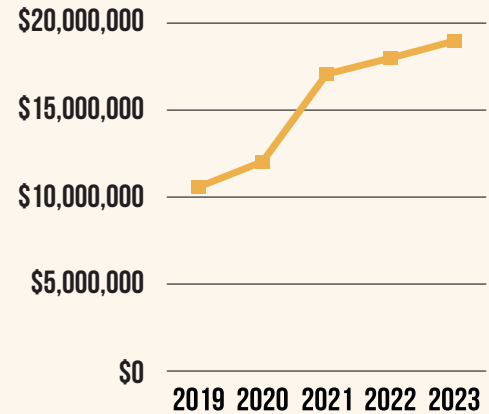




REVENUE SOURCES

\$18.97 MIL TOTAL EARNED INCOME
DONATIONS
FAMILIES

REVENUE GROWTH



216 EMPLOYEES ACROSS THE REGION
1 IN 4 EMPLOYEES ARE PROGRAM GRADUATES

5589 SUPPORTERS IN 2023 

5 STATE REGION



5 WOMENS CAMPUSES

8 MENS CAMPUSES

1 ADOLESCENT GIRLS CAMPUS

1 WOMENS JAIL OUTREACH





2023

YEAR IN PHOTOS





RESIDENTIAL RECOVERY

Putting Hope Within Reach through
long-term residential **Discipleship**.



In 2023, our residential recovery centers reached more people than ever before, crossing the threshold of 1000 individuals served during the year. We saw many lives transformed, as the restoring power of faith in God broke chains of addictions and rewrote the stories of men, women, and adolescents across the Pacific Northwest. We praise God for countless blessings in 2023, including the moving of our Billings Men's Campus to a new location with increased capacity, the completion of our cabins at the Alaska Women's Campus which serves a population in great need in that community, and the finishing of our new Shared Services office in Milwaukie, Oregon, that is a beacon of light to the community and a testament to God's provision.

Transformation

Students' identities are rebuilt upon the knowledge of who they were created and chosen to be - Children of God.

Reconciliation

Students are shown a model for forgiveness and repair. Relationships and hope for the future are restored.

Faith

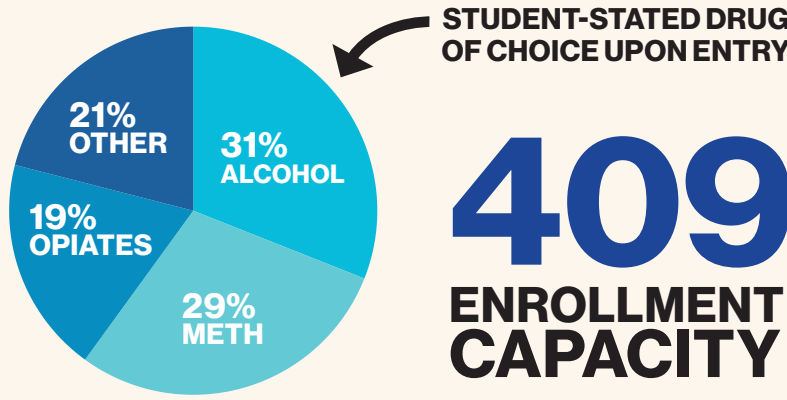
Faith is believing in God for the impossible. Students learn how to invite God to help them overcome their life-controlling problems.



1005 STUDENTS SERVED
⬆️ **8% INCREASE** YEAR OVER YEAR



166 WATER BAPTISMS  **528** DECISIONS FOR CHRIST



68% OF STUDENTS LACK PERMANENT HOUSING UPON ENTRY



VOCATIONAL TRAINING

We were created to be **productive.**



Last year was an incredible testament to the power of God working through our thrift stores. As a team, our staff, students, and volunteers united to create an exceptional year in terms of sales and donations. Our unwavering focus remains on our vocational students, ensuring they receive intentional training and mentoring to thrive.

In June of 2023, we were privileged to open our newest Super Thrift branded store in Oregon City, Oregon. It was an unforgettable moment, marking the largest Grand Opening our thrift stores have ever seen, with record-breaking sales and customer turnout. This new store not only expands our mission of Adult & Teen Challenge into a fresh community but also provides a nurturing space for our students to receive vocational training within our thrift stores.

The support of our donors is a true blessing, enabling us to witness the transformative impact of Jesus in the lives of our students within our program. We take immense pride in our dedicated staff and donors, who tirelessly Put Hope Within Reach for those battling addiction. This new store represents another stride forward in our mission to serve and uplift those in need, and we eagerly anticipate the future of Adult & Teen Challenge PNW as we press on in our journey.

Life Skills

Our students are gaining **real-world experience** and applying **biblical principles** during their daily lives.

Stewardship

Students learn how to **manage God's resources** with excellence every day.

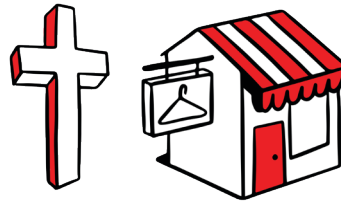
Teamwork

Teamwork is **servng together in unity**, and is at the core of our vocational training.





16% INCREASE IN SALES
86,453 TOTAL LOYALTY MEMBERS
TO SUPPORT THE MINISTRY



98,700 HOURS OF VOCATIONAL TRAINING





HOPE OUTREACH

Delivering Hope Beyond our Walls



Outreach Coordinators were instrumental in reaching our communities in 2023. All 5 states took part in intentional outreaches that shared compassion through evangelism, discipleship, and prevention efforts. These efforts opened new doors for partnership and support for the ministry, all with the mission to Put Hope Within Reach!

Compassion

Like the Good Samaritan, we are **meeting tangible needs** in our communities.

Evangelism

Declaring the **Word of God** to the hopeless and introducing them to the hope found through Jesus.

Discipleship

Conducting **community discipleship groups** throughout the region.

Prevention

Delivering the **Decide 2 Impact Prevention Program** to local youth.



296

CHURCH PRESENTATIONS



77

DECIDE2IMPACT SCHOOL PRESENTATIONS



34,978

TOUCH CARDS HANDLED OUT





BEHAVIORAL HEALTH

Full spectrum service, state certified,
Christ-centered behavioral health services.



We are thrilled to announce that Life Renewal has started new community facing outpatient programs. These programs are designed to reach more people who need help with life-controlling issues, but may not be able to join our long-term program. Our community programs are shorter versions of the Adult and Teen Challenge discipleship program outpatients, which blend proven methods with the love and grace of Christ. Our aim is to help people find freedom and joy in Christ and overcome their challenges. We have launched these community programs in Pasco, Washington, Twin Falls, Idaho and Milwaukie, Oregon, and we can't wait to see how God will use them to change lives.

Life Renewal is a program that helps people transform their lives for good. We know that this process is challenging and that people need Peers who can relate to them and their struggles. The Peers provide a warm, supportive and kind environment for the students. They also motivate the students with their own stories of overcoming hardships and give advice in their own language. The Peers are always ready for the men and women at the centers and at the vocational sites to help them throughout our program. Adding Peers to our staff is going to make a huge difference in how we can impact students, allowing us to give them more personalized time and care. Our goal is to have a peer at every Life Renewal Site by the end of 2024. This is also creating opportunities for our graduating interns and building career paths.

1001

CLIENTS SERVED

47% INCREASE IN SERVICES
YEAR OVER YEAR

517

**NEW CLIENT
ADMISSIONS**

10,296

**HOURS OF GROUP
INTERVENTIONS**

5,484

**HOURS OF INDIVIDUAL
COUNSELING SERVICES**

180

**UNDERINSURED OR
UNINSURABLE CLIENTS
GIVEN FREE SERVICES**

31

**PSYCHIATRIC
NURSE
INTERVENTIONS**

900

**PEER-RELATED
SERVICES**



GLOBAL REACH

ATCPNW contributed to many missional efforts in 2023, funded from Thrift Store donation jars and earned income. Recipients included:



UGANDA



CAMBODIA



HUNGARY



**SOUTH
AFRICA**



ZAMBIA



INDONESIA



**NORTHERN
ASIA**



**SOUTH
AMERICA**



PARTNER WITH US

There are numerous opportunities at **every campus** across the Pacific Northwest to **support Adult & Teen Challenge!**

GIVE

Make an online donation, or sponsor a student! Visit our website to make a gift today!

Donate at:

2024.tcpnw.com

VOLUNTEER

Donate your time. Contact your local campus or thrift store to get the conversation started!

VISIT A THRIFT STORE

Visit one of our eight Thrift Store locations to find great deals on used items, as well as donate your gently-used goods!



Join our loyalty program by scanning the QR Code with your phone's camera! Start earning rewards today.





Chris Hodges
CEO, President



Brian Nelson
Chief Operating
Officer



Josh Howard
Chief Financial Officer



Dareck Shannon
Division Lead,
Thrift Stores



Allen Turley
Division Lead, Staff
Dev. & Training



Matt Shaw
Exec. Dir., Boise
Girls Academy



Tara Thatcher
Division Lead,
Life Renewal



Frank Clore
Division Lead,
Outreach



Johnathan Taylor
Division Lead,
Adult Programs

EXECUTIVE LEADERSHIP



Adult & Teen Challenge
Pacific Northwest

BOARD OF DIRECTORS

Chris Hodges – President
Robert Barham – Chairman
Lindee Stanford – Vice Chairman
Rodger Snodgrass – Secretary/Treasurer
Stuart MacDonald
Gordon Bartel
Phil Birk
Dr. William Foster
Peter Gilmartin

THRIFT STORES

OREGON

Albany Thrift Store
310 SE 2nd Ave
541-791-7006

Eugene SuperThrift
555 River Rd
541-726-5454

Bend SuperThrift
694 SE 3rd St, Suite B
541-647-1281

Lebanon SuperThrift
2711 S Santiam Hwy
541-258-2584

Portland Thrift Store
5050 SE 82nd Ave
503-719-5381

Salem SuperThrift
3060 Portland Rd NE
503-585-6278

Oregon City SuperThrift
1809 Molalla Ave
971-825-3600

MONTANA

Missoula Thrift Store
2036 Mullan Rd
406-728-1171

LIFE RENEWAL LOCATIONS

Milwaukie Life Renewal
18600 SE McLoughlin Blvd
Milwaukie, OR 97267
855-932-3852

Alaska Life Renewal
705 S KGB Rd, Ste K.
Palmer, AK 99645
907-268-4686

Pasco Life Renewal
1600 N 20th Ave, Ste A
Pasco, WA 99301
509-537-3025

Twin Falls Life Renewal
224 Martin St.
Twin Falls, ID 83301
208-543-7230

ADULT & TEEN CHALLENGE PNW CAMPUSES

ALASKA

Alaska Men's Campus
560 S Knik-Goose Bay Rd
Wasilla, AK 99654
907-202-8850

Houston Women's Campus
977 Kenlar Rd

Houston, AK 99654
907-202-8850

MONTANA

Missoula Campus
3815 S 7th St W
Missoula, MT 59804
406-543-1912

Billings Campus
5351 King Ave W
Billings, MT 59106
406-272-7220

IDAHO

Boise Girls Academy
1723 S Horton St
Nampa, ID 83686
208-546-0832

Twin Falls Campus
1852 East 3900 North
Buhl, ID 83301
208-736-2566

OREGON

Eugene Campus
85989 Bailey Hill Rd
Eugene, OR 97405
541-344-4328

Central Oregon Campus
435 NE Burnside Ave
Bend, OR 97701
541-678-5272

Portland Metro Campus
380 NW 6th Ave
Estacada, OR 97023
503-230-1910

Willamette Valley Campus
31700 Fayetteville Dr
Shedd, OR 97377
541-491-1002

WASHINGTON

Graham Campus
21115 92nd Ave E
Graham, WA 98338
253-846-0888

Spokane Campus
2400 N Craig Rd
Spokane, WA 99224
509-244-5610

Seattle Metro Campus
18611 148th Ave SE
Renton, WA 98058
425-226-2608

Tri-Cities Campus
2524 W Pearl St
Pasco, WA 99301
509-547-2389

Tri-Cities Women's Jail Outreach
PO Box 1218
Richland, WA 99352
509-946-5395

Shared Service Office & TCMI
18600 SE McLoughlin Blvd
Milwaukie, OR 97267
971-255-0658

GET HELP NOW

Are you or a loved one ready to take a step
towards recovery from drug or alcohol addiction?

TCPNW.COM

877-302-7149



Adult & Teen Challenge

Pacific Northwest